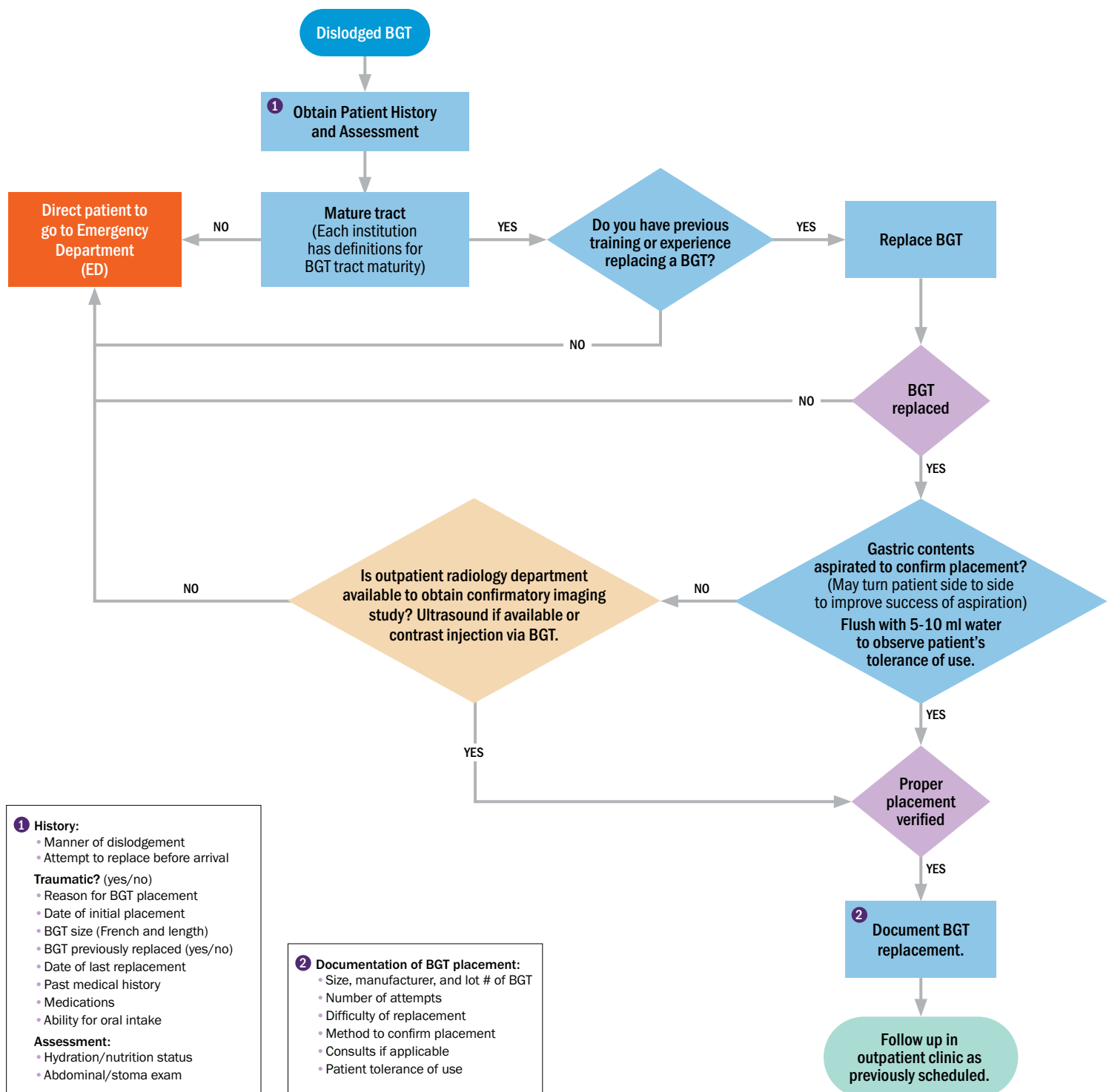


Replacement of a Dislodged Balloon Gastrostomy Tube (BGT) in the Outpatient Setting for the Pediatric Patient



Note: This content has been developed for use by healthcare professionals to inform other clinicians and/or patients/caregivers. ASPEN is making this content available for informational purposes only. This content is not based on ASPEN Board Approved documents and should not be confused with ASPEN clinical guidelines as it was not developed according to ASPEN guideline processes. Recommendations provided here do not constitute medical or other professional advice and should not be taken as such. To the extent that the information presented here may be used to assist in the care of patients, the primary component of quality medical care is the result of the professional judgment of the healthcare professionals providing care. The information presented here is not a substitute for the exercise of professional judgment by healthcare professionals. Circumstances and patient specifics in clinical settings may require actions different from those recommended in this document; in those cases, the judgment of the treating professional should prevail. Use of this information does not in any way guarantee any specific benefit in outcome or survival. This tool is intended to supplement, but not replace, professional training and judgment.